

Prepositions

made with sparklee.com

Preposition

A preposition is a word that shows the relation between a noun or pronoun and some other words in the sentence.



Behind



INTO



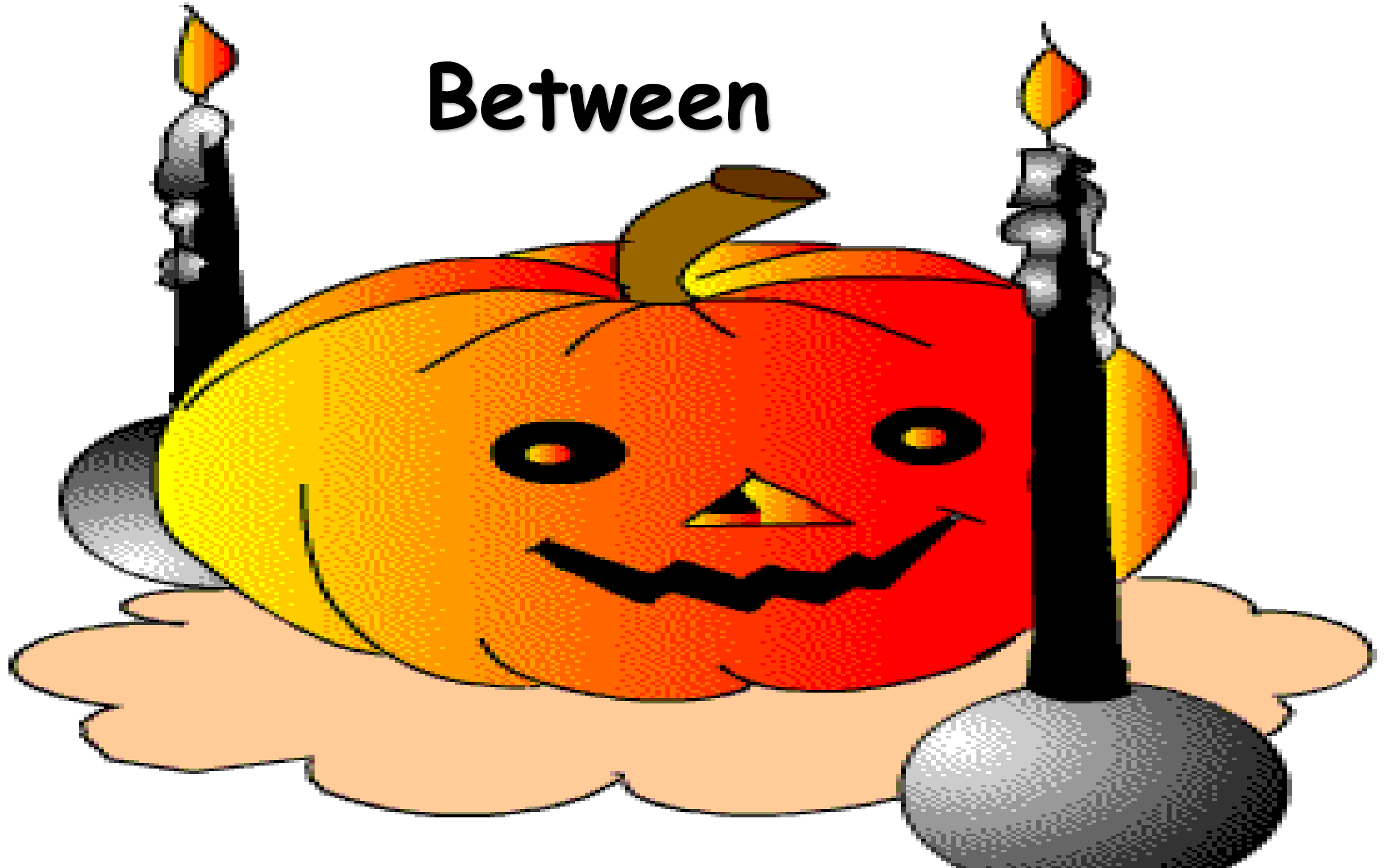
Over





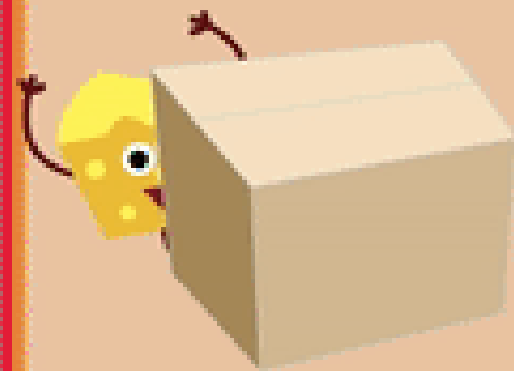
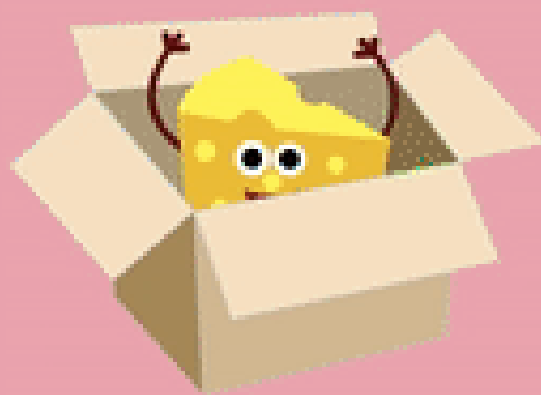
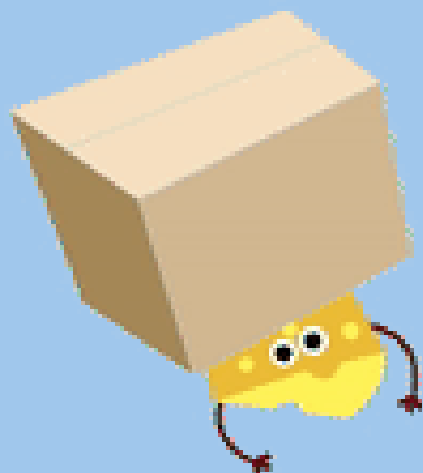
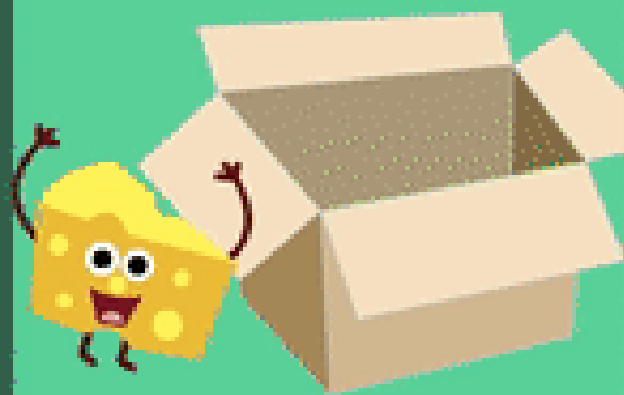
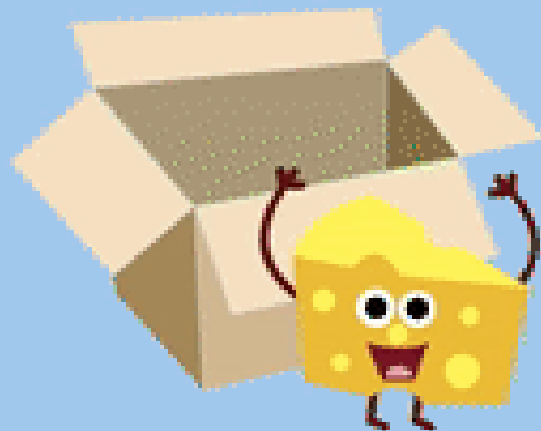
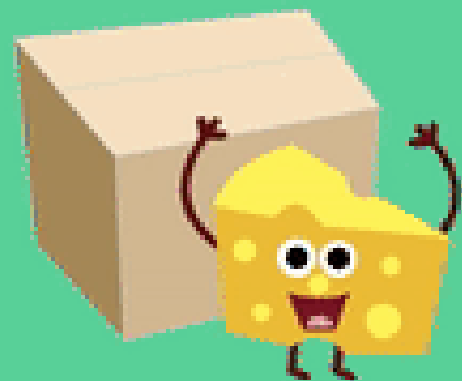
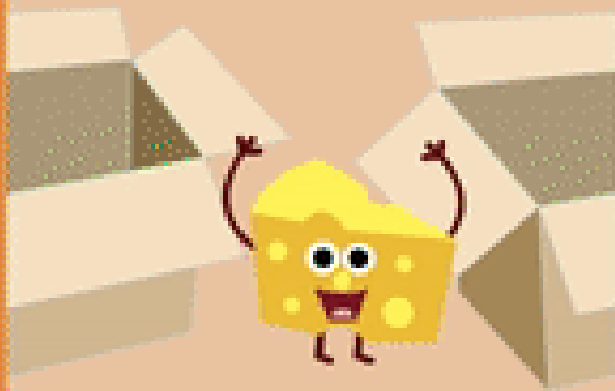
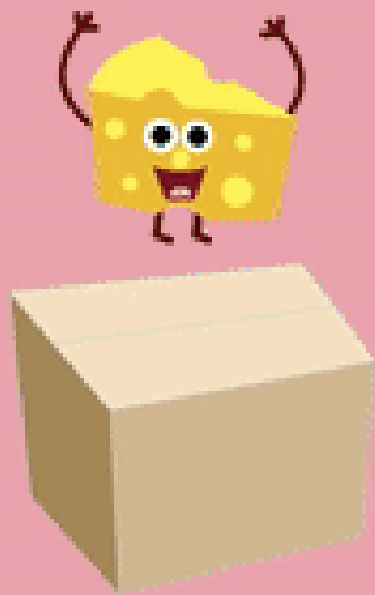
On

Between





Where is the Bird?



A dog is **under** the table.





There is an outhouse between the two trees.



There is an outhouse among the trees.

in front of

I'm in front
of the sofa.

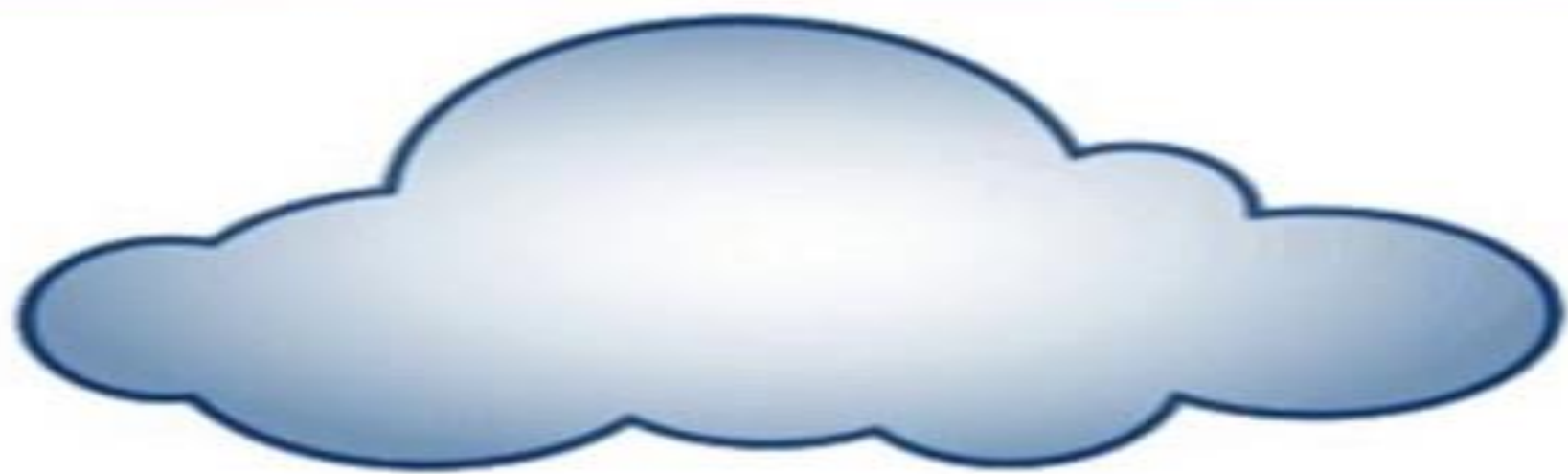




ABOVE

inside





Below

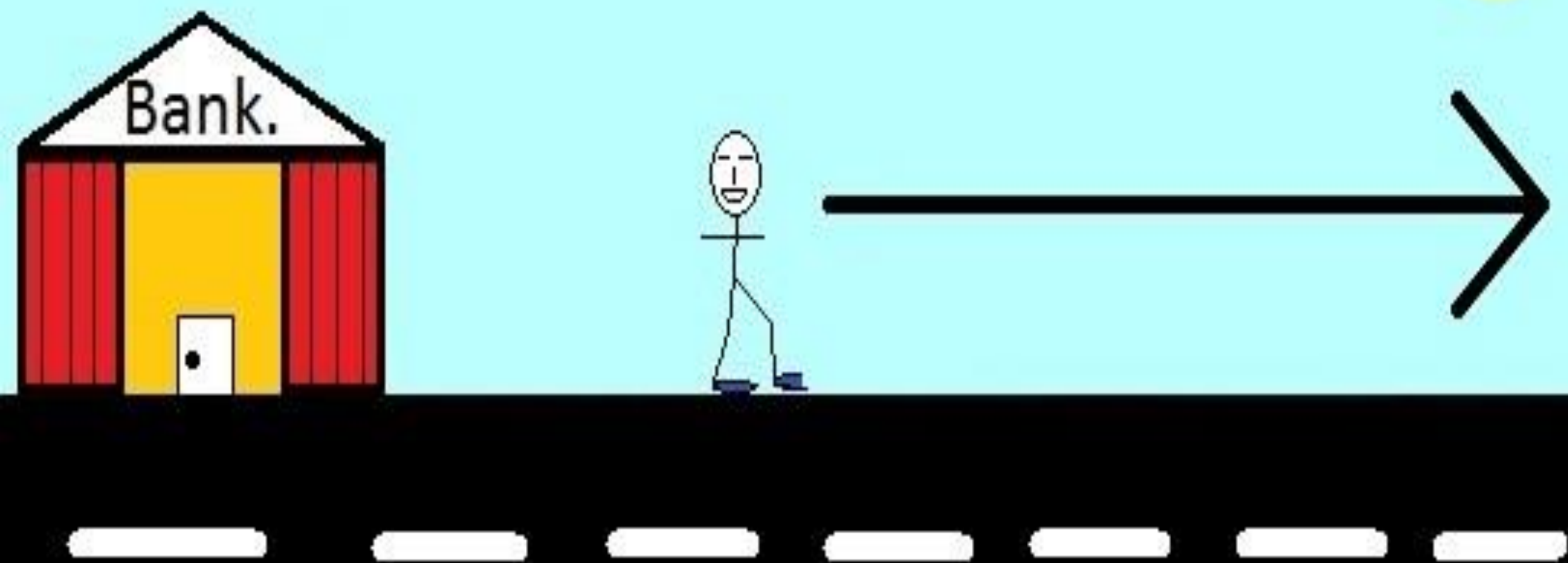
The ball is going

Down

the stairs



The man is walking away from the bank.



Where is the dog?

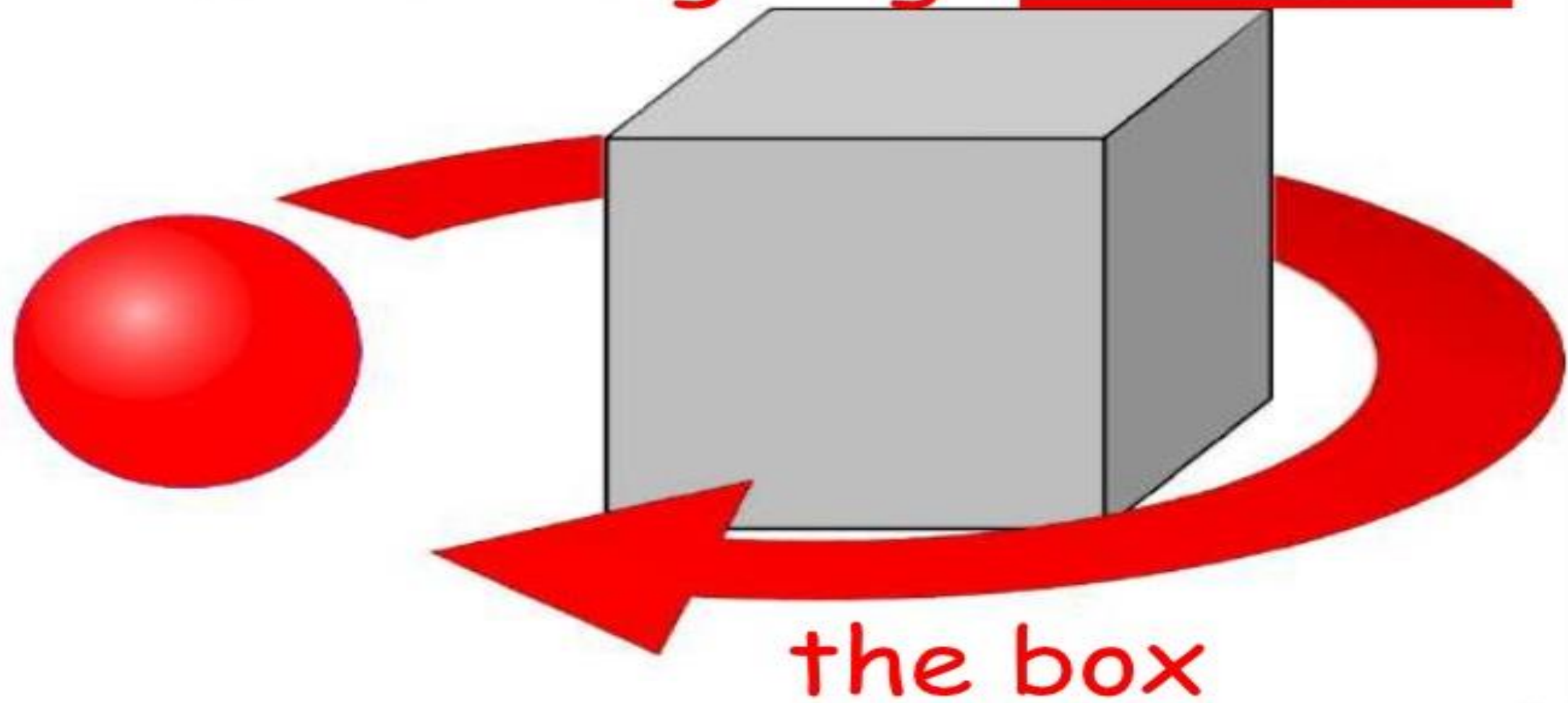


The dog is **next to** the house.

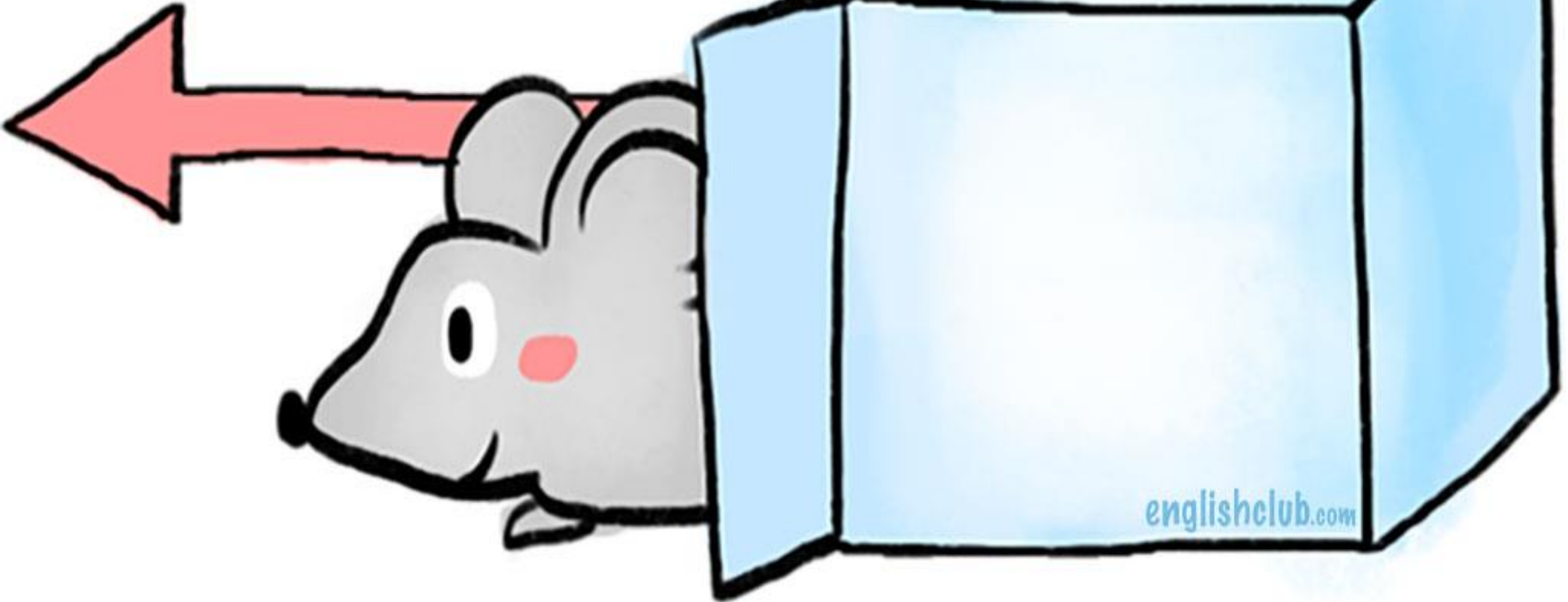


near

The ball is going *Around*



outside

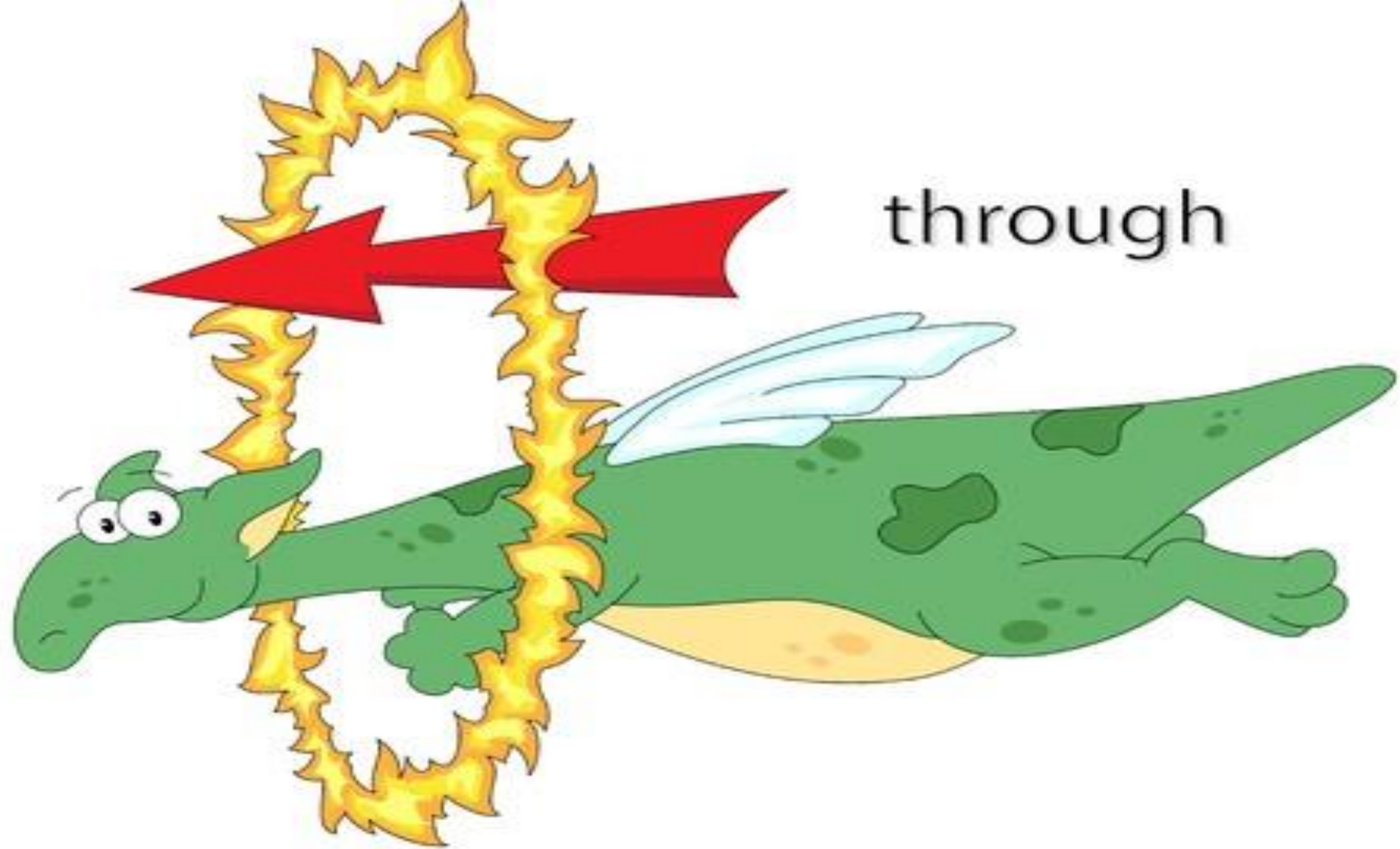




Across



The frog is against the log.



through